

# YEAR REPORT 2022-2023

The Hague Center for Global Governance,  
Innovation and Emergence



# THC YEAR REPORT 2022-2023

## CONTENTS

<b>HISTORY</b>	<b>3</b>
<b>THE WORK THC DOES</b>	<b>3</b>
<b>THC CO-CREATIVE COLLECTIVE</b>	<b>4</b>
<b>GLOBAL GOVERNANCE</b>	<b>5</b>
STRATEGIC CONNECTING AND CAPI	5
SDI LEADERSHIP AND MESHWORKING	6
EVOLUTIONARY LEADERS CIRCLE	6
INNER DEVELOPMENT GOALS	7
WELLBEING DEVELOPMENT GOALS	7
THE CLUB OF BUDAPEST	7
NEW COB MEMBER CLUBS	7
INTEGRAL CITY	8
LIVING CITIES EARTH	8
IEC 2022	8
SIEUK	9
CARE FIRST AND THE SCHOOL OF CARE	9
PERSONAL KEY	9
TEAM DEVELOPMENT	9
WORLD UNITY WEEK AND PEACE WEEK 2022-23	10
BRIDGING CONTINENTS	12
MANNAHATTA PROJECT	13
<b>INNOVATION</b>	<b>14</b>
CITY OF HOPE BAKERY	14
PEACEDAY YOUTH ASSEMBLY	14
ART OF INTERGENERATIONAL INTERACTION	14
WHOLE SYSTEMS DESIGN: INQUIRIES IN THE KNOWING FIELD	15
SPIRIT OF CANADA DIALOGUES PROJECT	15
LOVE ORGANIZED	15
METAAL KATHEDRAAL / ECOLOGICAL SOCIETY NETHERLANDS	17
UTRECHT WATER BIENNALE 2022	17
COHERE+	18
COHERENET	18
<a href="#">LOVE TO</a>	<a href="#">19</a>
<b>EMERGENCE</b>	<b>20</b>
ECOINTENTION - EUROPE ENERGETICS PROJECT	20



	2
DAY OF MINDFULNESS AND COMPASSION	20
WHOLEWORLD-VIEW	21
UNITIVE NARRATIVE	22
A RADICAL GUIDE TO REALITY	22
LOVING CLASSROOM	22
STORY OF THE NEW PARADIGM	22
THC EGYPT	23
THE HAGUE CENTER FOR FIELD INQUIRY	23
BRINGING COLLECTIVE CONSTELLATIONS ALIVE: DYNAMIC CONVERSATIONS WITH FACILITATORS OF COLLECTIVE CONSTELLATIONS	24
THE SCIENTIFIC AND MEDICAL NETWORK CONFERENCE	25
HOLOMOVEMENT	25
ROLE OF THE BOARD	26



## INTRODUCTION

# HISTORY

The Hague Center for Global Governance, Innovation and Emergence (THC) was founded in 2008 by the Center for Human Emergence (CHE) - foundation with ANBI status - with Peter Merry and Anne-Marie Voorhoeve as initiators. The aim was to conduct internationally oriented meshwork projects under this name. In 2013, the board of CHE decided to disconnect THC from the CHE, under the leadership of Anne-Marie Voorhoeve. As a new independent foundation, THC builds on the ideas and years of experience in doing meshwork projects.

## THE WORK THC DOES

*We are an organ'isation and co-creative collective  
serving the emergence of a conscious, harmonic humanity.*

*We innovate heart-centered planetary governance  
with all domains of life, visible and invisible.*

THC exists to help align necessary resources for the current human and planetary transition. This transition is, in its essence, about moving from separation and polarization, towards coherence and complementarity. This same transition is playing itself out across all sectors — ecology, economy, and governance, to name a few key ones.

The Hague Center focuses on international societal challenges whose complexity requires collaboration between multiple stakeholders. We provide insight into the current condition, and co-design and facilitate transition processes towards better futures

The Hague Center operates on a global scale, including a network of centers (Europe, Egypt, South Africa, Mexico and Canada) and partnering with global-scale organizations such as WholeWorld-View, World Unity Week, Evolutionary Leaders Circle, the Club of Budapest, Living Cities Earth, Integral City, Unity Earth and SINE.

THC serves the global community through large-scale projects and local communities through projects designed to meet local challenges.

The foundation has as its aim:

- To be Co creators from the heart for planetary enlightenment
- To contribute to the co-creation of a global society in which humankind can realize its greatest potential
- To co-create practices for global governance, innovation and emergence in order to weave the fabric of society into one social body
- To be process guides helping national and international institutions solve complex challenges such as how to reach their Sustainable Development Goals, using the power of collaboration and spiritual intelligence.



THC seeks to achieve its purpose by:

- Initiating our own projects (for example: School of Social Alchemy, Conscious Witness Project)
- Accepting commissioned projects
- Establishing strategic connections
- Providing training, conducting coaching and designing such projects
- Arranging speakers for national and international conferences
- Participating in, cooperate with, execute governance/administration
- Providing services to other companies and legal entities, who in any way contribute to our purpose.

All THC projects are interconnected and have multiple dimensions. Together they contribute to the development of 'global governance, innovation and emergence'

## THC CO-CREATIVE COLLECTIVE

Anne-Marie Voorhoeve  
Mona Rabie  
Anita Floris  
Diana Claire Douglas  
Pieter Wackers  
Kara Stonehouse  
Marianne de Jager  
Aansan Yeh  
Natascha van den Ban  
Adrian Iacobus  
Anna Freedman  
Haseena Patel  
Shweta Shrivastav



## PROJECTS 2022-2023

## GLOBAL GOVERNANCE

## STRATEGIC CONNECTING AND CAPI

Establishing strategic connections, which serve the purpose of THC is an essential part of our work. An important aspect of that is CAPI: Coalescing Authority, Influence and Power (Adizez, Don Beck).

In the different strategic reasons for making connections there are two movements:

- From the inside out - what is needed for our own individual and collective consciousness growth to be available for our work, including participation in Communities of Practice;
- From the outside in - aimed at entering into strategic connections for existing and new policy developments in different sectors, between sectors and at different locations.

THC members often fulfill an initiating, leading, facilitating or actively participating role in different networks and organizations that work towards consciousness development.

THC is involved in a large number of projects, networks and networks of networks, including

- WholeWorld-View
- Evolutionary Leaders Circle
- World Unity Week
- Cohere+
- SINE network
- Integral City
- Center for Human Emergence
- The Club of Budapest
- Co-Creating Europe
- Hopemakers Network
- NETSPIRIT
- Together/Mabaad
- Peace Day Youth Assembly
- Humanity Rising
- Care First
- Loving Classroom
- NOW Assembly
- Global Education Futures
- Purpose Earth

- One Humanity Institute
- UK Spirituality in Education Alliance (SIEUK)
- We the world
- The Scientific and Medical Network (SMN)
- Codes for a Healthy Earth
- Club van Boedapest Nederland
- Bridging Continents
- HOPE community
- Devine Mother's Love
- GAIA think tank

As a result, THC can be a connecting link between these different initiatives, and help them to reinforce, complement and learn from each other, so that what they do is aligned with a shared and overarching goal.

Partners include:

- City Transformers
- Het Veerhuis
- Greenheart
- MetaalKathedraal
- The Laszlo Institute of New Paradigm Research
- Gaianet
- Holomovement
- Sarah McCrum
- Love To
- Brand Earth
- PYM
- PYMWYMIC
- Hanson Robotics
- Life Itself
- Emerge
- IFIS
- Symphonics
- DIIF foundation
- Four Worlds International
- Leave No Girl Behind International
- Dolphin Embassy
- Unity Earth



## SDI LEADERSHIP AND MESHWORKING

THC's expertise lies, among other things, in the field of Spiral Dynamics integral, and in bringing organizations and people together and motivating them to work for a higher purpose. A unique expertise of THC lies in the design and facilitation of multi-stakeholder projects. The term we use for this is Meshworking, introduced by Dr. Don Beck.

Meshworking is both a vision and a method. In essence, Meshworking is about the way in which we bring a variety of stakeholders together behind a common, higher goal, so that real progress can be made in solving complex issues.

Unlike in a network where the connections between the partners are focused on their own interests, each partner's own interests are placed within the context of the common interest. THC fulfills the role of 'whole holder' - the person who gives the example of how cooperation can be based on social intentions. THCs often fulfill this role on a (partly) voluntary basis. This also ensures a large degree of independence.

## EVOLUTIONARY LEADERS CIRCLE

Anne-Marie Voorhoeve has been active in the [Evolutionary Leaders Circle](#) since 2019, joining other leaders such as Ervin Laszlo, Jude Currivan, Don Beck, Deepak Chopra, and Jean Houston. In 2022 and 2023 Kara Stonehouse was also an active member, participating in the Artists Catalysing Evolution synergy Circle.

The Evolutionary Leaders Circle is a group of thought leaders from diverse disciplines who come together in synergy to help support a shift in consciousness. The Source of Synergy Foundation shares the work of the members in the circle with the public in the spirit of open inquiry through social media, various educational opportunities and lively exchange.

Anne-Marie is a member of the Evolutionary Leaders Council for the Source of Synergy Foundation, as well as the nominations committee for new Evolutionary Leaders.

She is a member of the Synergy Circles:

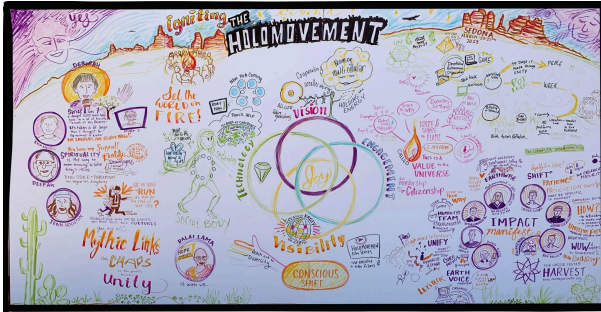
- Conscious Business Synergy Circle
- [SDG Thought Leaders Circle](#)
- unitive narrative Synergy Circle
- UNITY & PEACE Synergy Circle

The Source of Synergy Foundation organizes Synergy Circle gatherings as part of its mandate to expand synergy among like-minded people seeking to serve the highest good. A number of Synergy Circles have been birthed by Evolutionary Leaders choosing to come together among areas of common interest or in local communities.

Anne-Marie Voorhoeve, Kara Stonehouse and Adrian Iacobus partnered with the Source of Synergy foundation to facilitate a stream in the Holomovement Sedona gathering. We made a significant contribution to the field in the Engagement Track.



And through graphic recording. When Kara placed JOY in the center of the Holomovement circles, it was noticed and amplified by Julie Krull as the essence energizing the movement.



## INNER DEVELOPMENT GOALS

The Inner Development Goals (IDG) are a professionally organized movement of mostly academics and business coach consultants, encouraging leaders to improve their inner capacities in order to better collaborate and plan to meet the Sustainable Development Goals.

THC attended the IDG summit in Stockholm Sweden in 2023 as part of the Cohere+ research and event deliverables. Kara Stonehouse provided graphic recording services in the Global Collaboration stream and presented a stirring summary poem at the end. <https://youtu.be/zEJw5AG8nzA>

With Emerge and IFIS (Institute of Integral Studies Germany) we facilitated a post-conference sense-making session using world cafe style dialogue which was very touching for the participants. We included a sense-maker story capture activity and artful collective synthesis. We sensed some tensions in the coherence of the movement and helped our Netherlands based IDG partners frame their thinking in an organizational developmental mindset.

THC board member Marianne De Jager and colleague Erica Harpe initiated IDG Hub and Dialogues in NL to empower participants with

the skills, values and mindset necessary to lead with compassion, integrity and innovation

## THE CLUB OF BUDAPEST

Anne-Marie Voorhoeve fulfills the position of Chief Creative Director of The Club of Budapest. In this capacity she leads the COB Projects Office, in which Pieter Wackers also works on behalf of THC. In addition, Anne-Marie is director of The Club of Budapest Netherlands.

The [Club of Budapest](#) (COB) is an international think tank and 'action tank', founded by the Hungarian systems philosopher Ervin László, with headquarters in Budapest and 25 national and regional departments spread over 6 continents.

The mission of The Club of Budapest is to be a catalyst for the transition to a sustainable world, by promoting the emergence of planetary consciousness, connecting generations and cultures, integrating spirituality, science and the arts, and supporting learning communities worldwide.

## INTEGRAL CITY

For many years, THC has been closely connected to [Integral City](#), an international meshwork organization founded by Marilyn Hamilton.

Anne-Marie Voorhoeve, Diana Claire Douglas and Pieter Wackers are part of the Integral City core team.

Integral City is a global constellation of communities of practice that nurtures cities as human hives. Launched in 2005, and now in Canada, USA, UK, Netherlands, Spain, Russia, Mexico, Australia and South Africa, Integral City connects the 4 Voices of the city to energize relationships, unify visions and develop eco-regional resilience strategies for hive wellbeing. Through placecaring and placemaking it inspires a Planet of Integral Cities as living, integral, evolutionary human systems, to become Gaia's Reflective Organs.





Pieter is part of Integral City's faculty, and teaches Integral City Beyond Smart, together with Marilyn Hamilton.

Diana Claire was honored as Integral City Meshworker of the year 2018, and Anne-Marie was Meshworker of the year in 2019.

From 2022 on, we are continuing our collaboration with Integral City and Marilyn Hamilton mostly in Living Cities Earth.

## LIVING CITIES EARTH

In 2022, Integral City, THC, and other partners like Living Cities Russia and Global Education Futures, founded a new initiative called [Living Cities Earth](#) (LCE), a global meshwork of creative initiatives and projects, key developmental institutions and evolutionary leaders.

Founding meetings were held at Anne-Marie's home in Vreeland and in Amsterdam, with Anne-Marie, Pieter, and Diana Claire (over zoom) joining as co-founders. Kara Stonehouse later joined the fundraising team coordinating grant writing activities.

The central question for LCE:  
'As humans, we are intricately connected to the evolutionary web of life. In our modern, complex world what does it mean to "human well"?'

In LCE we aim to nurture our cities and ecoregions as healthy, happy, caring homes in harmony with each other and nature, across four key dimensions: person, people, places, and planet. Our cities and bioregions survive and thrive honouring all life on our ONE planet.

We do that by providing people with the tools and resources to care for the cities they love.

We offer an inspiring vision, empowering knowledge and practical solutions, tools and methodologies, create engaging learning and integral development opportunities, facilitate networking and nurture a culture of collective action. And we create a global impact community where local and global leaders of

positive change and innovative institutional partners could meet, unite, thrive, combine resources and co-create to nurture life in 10.000 living cities.

LCE has grown fast and is still growing and very active, with THC'ers in the management team and many other workgroups.

## IEC 2022

The [Integral European Conferences](#) are the main global gatherings of the international integral community.

They unpack the full potential of the integral approach, fleshing out the shared vision with new findings, applications, research and experiential processes to accelerate change in the world.

The conference is the biggest Integral Social Mixer of the year and it is designed to be a deeply human event where people talk, dialogue, listen and really meet each other.

At the Integral European Conference 2022, Anne-Marie and Diana Claire co-facilitated a workshop on Walking the Spiral of Peace. Using Spiral Dynamics Integral as the framework and Constellation Work as the process, we explored and experienced Peace in 7 levels of the Spiral. Working with the impact of polarization, each participant had the opportunity to represent Peace as they walked the Spiral and to represent conflict (Ukraine-Russia) as they experienced Peace.

inspire and learn from each other to transform Europe into a place of solidarity and diversity, rooted in the prior unity of all being.

Co-Creating Europe wants to show the European public that there are many Europeans who don't want to let their societies fragment into isolated subcultures. In this spirit of human

## SIEUK

SIEUK works to promote an understanding of spirituality within schools and to create learning



environments that better promote and nurture the inner life of students and teachers.

## CARE FIRST AND THE SCHOOL OF CARE

Pieter Wackers is part of the core team of [Care First](#).

In a Care First World the well-being of people and planet comes first. Money is used to make well-being possible. Everyone can provide for their basic human needs and develop themselves. We honour and preserve the eco-systems of our beautiful Earth..

In 2022 and 2023 Pieter's main focus has been on developing the [School of Care](#) and the Personal Key process.

The School of Care is a 'place' to strengthen the experience of our true selves and life purpose and activate our heart intelligence – to get to know ourselves from our core, learn to live and work from the heart and develop the gifts we bring.

In the School of Care you are supported in making the shift from a Money First to a Care First attitude. (Self Care, Self Development, Transformation, Action).

We work together to learn to sustain ourselves financially in this world and collaborate on creating the economy and financial world we wish for.

## PERSONAL KEY

As part of the School of Care, Care First has developed a process for people to find their [Personal Key](#).

A personal key is how someone's essence expresses itself. The activity of our heart by which we intelligently respond to our environment and fulfill our life purpose. Our personal key describes the unique way by which we contribute to our world community.

It has been fascinating to see people give words to this part of themselves that has always been there, but not always known. It is strongly connected with the essence of who we are. But where our essence is static, the personal key describes the activity of that essence - the dynamics of that essential Self, which we also experience as the unique activity of our heart's intelligence.

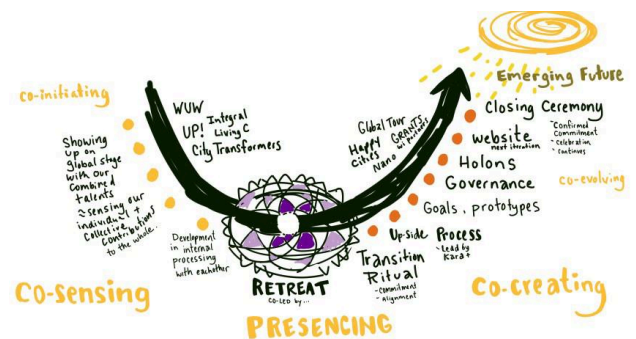
As of December 2023 there are 9 Personal Key facilitators, and we have developed a training to allow more people to learn this skill.

## TEAM DEVELOPMENT

We continue an ongoing internal governance process to define our own heart-centered governance practices. We hosted a virtual team retreat and developed small project teams to define our governance structures. We are transitioning to a more formalized version of our governance practices which we sense will be of value to share with groups aligned with our vision and values.

We used deep listening processes such as Life-Alignment, ADIEWA and Systemic Constellation work. Anne-Marie hosted and Diana Claire facilitated several Systemic Constellations. The themes in 2022 were; "Are we a coherent co-creative collective? Individual gifts and place in THC Field?" "Partnering with Donut Economics." "Preparing for World Unity Week."

In 2023 the themes were: "Listening to THC's compass to fulfill THC's evolutionary purpose and be fully resourced, in service of the Whole." "Anne-Marie's roles + finding a new Chair."



In 2022 we continued to develop THC's practice of moving beyond polarization. Diana Claire, Anne-Marie, Kara and Mary Elizabeth met to process polarities using Leslie Temple-Thurston and Corelight's *Marriage of Spirit* tools. This is now a foundational practice which can be called upon when needed.

In 2022 Lisette Schuitemaker offered three sessions on the Five Child Conclusions based on her book

In 2022 Jude Currivan offered three sessions on *The Story of Gaia*, to deepen our knowledge and awareness few can bridge the separation between consciousness and science when we embrace unitive awareness. Consciousness cannot only be traced and experienced in our interior and described from (inter)subjective perspectives, but can also be traced in the exterior and defined in objective perspectives, supported by the study of Astronomy, as Currivan does in her work on the Whole World View. The world is multidimensional, interconnected, interrelated and in-formed. To overcome the world of separation, there is a "fundamentally unified nature of the whole - the me, the we, and the all"

In 2023, we have been slowly developing the website further, practicing our holon structures and using miro to align our operations strategies.

## WORLD UNITY WEEK AND PEACE WEEK 2022-23

The [World Unity Week](#) online convergence of hundreds of peace builders and change agents around the world creates a space for global connection and nourishment. These convergences continue throughout the year at the changing of the seasons with Peace Weekend in September, Enlightening our Way in December and Beloved Community in early Spring.

We are offering our Journey of the Magic Canoe to this process, where we can all paddle together to get us to ONE WORLD. We have committed to this practice until 2030. The

mission is to see a sustainably peaceful world emerging.



We work closely with UNITY EARTH, Purpose Earth and the SINE network and are co-producer of World Unity Week which attracts millions of views on social media and brings together approximately 600 globally diverse co-creators to offer hundreds of free events. The conversations and ideas shared in these convergences are the sparks of the global fire we are tending. We see glimmers of the future we are capable of building together.

Anne-Marie Voorhoeve is a core contributor and strategic connector in this project.

Kara Stonehouse co-stewarded a new convergence room called Healing for Rising in 2022 and 2023, with several European colleagues, focusing on spiritual healing and dialogue for thriving individuals and collectives.



This group created a mission in the 99 days of Peace through Unity - offering ceremonies on the new moons and full moons from June to September. The mission was called



Ceremonies for Inner World Peace and tackled global challenges such as caring for the Soul of the USA, and the energy of Domination in our world.



The Meshworking Cities and EcoRegions room continued with presentations from Living Cities Earth network who grew out of the Happy Cities lab work we did in the previous years.



Kara continued to graphically harvest for the Peace Week events.



Diana-Claire Douglas held the Unitive Justice room in December 2023 Enlightening Our Way Together, exploring what justice becomes in a unitive world view. This led to several constellations with Jude Currian and the Wholeworld-View team. Kara partnered with Felipe Leall of Gaia Commons to present Love Organized - Grounded Strategies for Transformative Change. This session was well received by David Gershon and others.

<https://youtu.be/d16coychoPY?si=FR9P5GIWkRtluhkT>



As the World Unity Community of about 600 people connect and co-create the convergences, we are building a strong field of coherence. We



are preparing to be able to work together in more concrete ways.

## BRIDGING CONTINENTS

One of the priorities of The Hague Center for Global Governance, Innovation and Emergence (THC) is to support and connect indigenous leaders and movements across the Americas. Our aim is to ignite a global indigenous and allied-led movement to unite humanity and restore Mother Earth

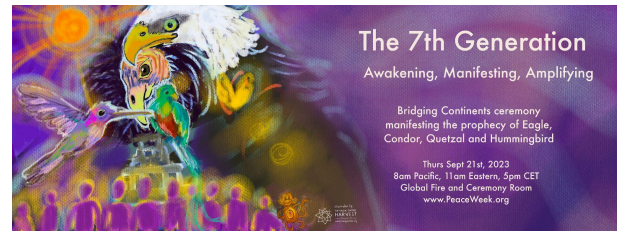
Anne-Marie Voorhoeve has been invited as space holder, deep listener and bridger of colonial and indigenous worldviews, to partner with Chief Phil Lane Junior and Four Worlds International. There is a beautiful prophesy that when the Condor, Eagle and Quetzal and Hummingbird— four birds found in the Americas — reunite, a spiritually-based movement, led by Indigenous Peoples, will ultimately result in a great era of compassion, peace, justice and prosperity that will unite all members of the Human Family.

A core team now called the Bridging Continents Council has been meeting regularly. Anne-Marie, Diana Claire and Rodrigo Martinez Romero from THC and Adriana Alvarez and Ejna Fleury bridge continents themselves.

In 2022 we connected with elders in Mexico who performed constellations as ceremony to listen to Mother Earth, we performed systemic constellations virtually in Canada and the Netherlands and co-created a beautiful guided constellation ceremony called the Rainbow Bridge Constellation and Ceremony. The purpose is to initiate the re-unification of the 5 continents – Americas, Europe, Africa, Asia, Oceania with Rainbow Bridges, fulfilling prophecy and manifesting the Prophecy.

Kara Stonehouse and Rodrigo Martinez led a 7th generation ceremony, connecting the

younger spiritual generation in an ADIEWA ceremony.



## MANNAHATTA PROJECT

In connection with Bridging Continents, Chief Dwayne Perry of the Lenape Nation in New York, USA, also invited Anne-Marie to represent the Dutch ancestry in Ceremony to shift the story for the future.

The Lenape were the original inhabitants of Manhattan when the Dutch arrived, leading to the colonization of sacred lands. Now we want to shift back to a regenerative world in harmony among people and lands.

Harry Uvegi and Jon Ramer are proposing the Mannahatta Project to use the power of Wall Street and Madison Avenue for transformative change. THC has played a role in advising this council on its governance structure and election process, and in serving as a "conscious witness" to support their work. Kara Stonehouse supports with graphic facilitation and connection with the Love Organized strategy and Gaia Commons.



## PROJECTS 2022-2023

## INNOVATION

## CITY OF HOPE BAKERY

THC is a core, active team member of the City of Hope Project with [One Humanity Institute](#).

Anne-Marie Voorhoeve and Adrian Morab visited the site and facilitated intensive working sessions to align and document the vision, business plan and development pathway. Anne-Marie secured a major interest free loan from a philanthropist to purchase a second building. Anne-Marie connected the project with energetic grounding and Deep Earth Architecture practitioner Wendy Hastrich.

2 million people visit the Auschwitz Memorial sites each year. They often leave the grounds internally shattered. One Humanity Institute's City of Hope will offer them a space of reflection, healing and hope - inspired by a new vision for humanity that honours those who perished while inspiring rising generations to reach for an alternative future that resolves obstacles to global harmony.

A bakery in Oświęcim, gifted by a Jewish family, and an adjacent historical bakery will be turned into a safe and inclusive space for gatherings and exchange around a hot meal or freshly baked bread.

The Bakery-Cafe will include a Learning Center to equip youth as resilient learners with 21st century skills, a Start-up Hub, Co-working Space and Youth Think-tank to co-create a new story for humanity and the world. The Loving World Engineering Institute envisioned by David Geffen of Loving Classrooms Worldwide, will be a founding institution in this hub.

There will also be a Social Media Center, Peace library and Conference Rooms.

OHI (One Humanity institute) envisions the former military buildings to become a City of Hope - a transformative tourist experience that will inspire people to not only never let such an

atrocities happen again, but to find their place in actively building a brighter tomorrow.

## PEACEDAY YOUTH ASSEMBLY

In 2020, THC formed an alliance with other organizations like MasterPeace, AIESEC and CityTransformers to organize a [Global Youth Assembly](#).

Young changemakers from almost 100 cities worldwide came together in a Global Youth Assembly on Peace Day 2020.

In 2021, Young people from Australia to Mexico organized 120 local POP UP PEACE EVENTS, creating the unifying momentum, encouraging them to continue to be the changemakers in their communities.

## ART OF INTERGENERATIONAL INTERACTION

With support from the Anna Lindh Foundation, THC organized a first De-Light-Full Dialogu: a gathering of young changemakers from the Euromed region with leaders and co-creators from other generations. Together, we aimed to cultivate meaningful support for the commitments of the youth towards creating a world that works for all of life.

THC held 6 preparatory meetings with an intergenerational design team with people from different (youth) networks, finding what qualities there were in the team and letting those inform the design. These sessions were a way of developing the field and culture of the whole event, as well as building coherence and connections.

The dialogue was based on the principles of intergenerational interaction: How can we design the playing field and the rules together, and then play? What works for each generation, and what can each generation's unique



contribution be? (Without losing sight of the differences within generations)

The results included strengthening youth networks and support through the concept of keynote listeners where leaders step into a role of deep listening.

## WHOLE SYSTEMS DESIGN: INQUIRIES IN THE KNOWING FIELD

Diana Claire's book, on Constellating for the Collective was published in April 2022: [Whole Systems Design: Inquiries in the Knowing Field](#). This includes 2 chapters where THC is involved. Anne-Marie wrote the Foreword. Although the numbers sold are not known, it is available worldwide. The author has heard that small study groups have formed in Australia and Tasmania.

Constellating for the Collective is an emerging branch from Systemic Constellation Work. This work is a philosophy of Life; a body of extraordinary teachings and knowledge including premises, principles, and themes; an experiential and embodied process; and a world-wide community of Participants, Constellators, Trainers, and Institutes. There are three branches of Systemic Constellation Work: Individual (within Family Systems), Organizational, and Collective Constellations. Diana Claire facilitates all branches with the THC team.

## SPIRIT OF CANADA DIALOGUES PROJECT

Kara Stonehouse and Diana-Claire Douglas are core team members of this Canadian volunteer group that meets weekly to create monthly dialogues to practice 'listening beyond division'. In 2022 we continued to host our monthly dialogues. In 2023 we did fewer external dialogues and focused on our strategic process as a collective for growth and partnership with Reconciliation Canada and the Museum of Nature in Canada. This did not work out in the end when our core contact decided to leave Reconciliation Canada and our partnership with the Museum of Nature fell through and the

team dispersed. Kara is taking the learnings and energy of this project forward to the Love Organized project that is calling her forward.

[www.spiritofcanada.org](http://www.spiritofcanada.org)

## LOVE ORGANIZED

[Love Organized](#) is a vision written by Kara Stonehouse from sensing into the collective, of how to get from meta crisis to metamorphosis into a healthy, peaceful world. It is structured as a 50 year business and governance model for massive transformation to a thriving civilization

THC envisions a society where conscious evolutionaries are empowered to build a harmonious, technologically advanced future. This vision involves providing foundational support such as basic income, eco-homes, and retirement plans to enable these individuals to focus on creating new governance and economic models.

The plan is to establish prototype governance and financial systems within existing cities and eco-regions, demonstrating how a society centered on holistic well-being can function. A globally recognized digital currency will facilitate regenerative wealth through nurturing spirit, art, ecology, community, and well-being. Education and careers will focus on personal and cultural development, providing pensions and retirement care.

The strategy is a phased approach to achieve this vision within 50 years:

1. Prototype Gaian Systems: Implement fully functioning systems in 3-5 cities or eco-regions, leveraging grants and donations.
2. Build a Supportive Network: Create small pods of global co-creators who support and strategize for the collective vision, becoming paying members.



3. Fund the Movement: Establish profitable businesses and impact investments to finance development and governance, starting with simple ventures and expanding to complex endeavors.
4. Bridge People Over: Promote the system beyond initial co-creators, working with companies to accept Gaian currency (SEEDS).
5. Become Mainstream: Achieve widespread adoption as people and institutions recognize the system's superior outcomes and demand its practices.

Gaia Commons plans to leverage existing tools and concepts, requiring capital, legal, and financial expertise to scale these efforts globally.

This project was birthed through the World Unity Week convergences and is growing in support and recognition. Kara is mentoring with Dan Spinner of Biofield Abundance to develop a new fund to support this work and partnering with Gaia Commons which has a strong potential large funding opportunity. This will be a strong focus for 2024.

## METAAL KATHEDRAAL / ECOLOGICAL SOCIETY NETHERLANDS

Natascha van den Ban is a member of the Art Council Metaal Kathedraal and part of the core team of the [Ecological Society Netherlands](#). A movement launched in 2021, visible, experienceable and deeply rooted in and around Metaal Kathedraal (Metal Cathedral) in Utrecht, the Netherlands. The Metaal Kathedraal is a sanctuary, podium, meeting place and workplace for art, science and social design that develops in the midst of society. A leader and expert in imagining circular life. Initiated in 11 years from an artist collective who believe in a world in which everything and everyone can flourish.

With a deep belief in the creative and self-healing capacity, a regenerative society is built from this place in practice. Including a regenerative health and knowledge center based on the power, knowledge and skills of nature. A workplace of and for the youngest generations where various labs are being built together that function as work and learning places for all ages. Accessible with high-quality expertise to strengthen a regenerative movement. Ecological Society Netherlands is an actively connected network that is committed to achieving a regenerative, balanced future with each other and nature. All actions are nourishing for the earth and our own living environment.

Within a team of innovators, Natascha has contributed to the formulation of principles and working methods: from the heart, in connection with nature and the eco- and life systems we are part of. She also actively contributes to a cultural, educational and participatory program.

The co-creative and pragmatic character is valuable and retains its value. This vital, physical place makes the difference in giving hope and perspective – in the Netherlands and beyond. That is why The Hague Center is a proud partner. With great thanks to Anne-Marie Voorhoeve, this movement is also supported by the Club of Budapest.

## UTRECHT WATER BIENNALE 2022

Natascha van den Ban is co-designer of the 1st [Water biënnale](#) of the province of Utrecht, the Netherlands in 2022. An initiative from Metaal Kathedraal (Metal Cathedral) in collaboration with Studio Makkink & Bey and Waterschool. Water biennale Utrecht is a biennial public event, stage and platform for change processes that works towards a long-term public program. The program offers a completely different picture of what water is, how we use it now and what water could be in a regenerative society. The Client Province of Utrecht will have the





opportunity to present itself nationally as Ambassador of Water.

Within a team of experts, Anne-Marie Voorhoeve and Natascha van den Ban, under the guidance of the artist duo Bik van der Pol, contributed in 2020-2021 to the design of a working method that we call the 'water tables'. That solidly substantiates movement towards change in an emergent way.

After the development of the working method the Art Council Metaal Kathedraal (of which Natascha is a member) focused on creating the water tables. A carefully constructed setting of designers, artists, scientists, innovators, experts, residents, children, reporters and a moderator. With an interactive and performative form of coming together, open thinking and working together in 'waterranger expeditions'. With our developed 'water mirrors' as ways of research: Wonderwater – getting to know water again/ Be Water – knowledge development/ (Of) Who is Water – political dimension. The format will be expanded in 2022 into a complete program with an experienceable knowledge library and growing water archive to bring all the information found together. A water lab from community science and a training from the Water School. All from a high level of knowledge, in search of new truths, accompanied by the presence and wisdom of our youngest water watchmen in training.

## COHERE+

In 2022, THC received funding from the European Union for 'Cohere+', a research and education project in partnership with: Life Itself (France), the Institute for Integral Studies (Germany), Emerge (Germany), and the Ekskåret Foundation (Sweden).

The purpose of this 3-year project is to uplevel the collective capacities of European change agents and learn together how to transform 'metacrisis', moving together towards a regenerative, cohesive, and healthy Europe. Our

focus is on the field of 'transformational' change agents in Europe: those who can be identified as taking whole-systems, integrative approaches towards paradigmatic societal transformation. Cohere+ combines research, events, technology development, and educational offerings in order to map the European 'transformational change' field, engage with agents to build community and coherence within the field, and develop the collective capacities of change agents across Europe to co-create regenerative systems and societies.

The overall objectives of the Cohere+ project are:

- To increase and enhance the self-knowledge and self-awareness of key actors and organisations in the European transformational social change field, so that the field is more visible to itself and its effectiveness in strategic alignment is improved;
- To support and facilitate greater connections and more effective transdisciplinary and transnational collaborations within the field;
- To increase the visibility and accessibility of the field to broader European society so as to increase participation and boost its potential for impact;
- To educate change agents and citizens within and beyond the field, to build the field's spheres of influence and thus leverage our collective power to co-create the future Europe we want to live in.

THC was the lead applicant for this project, and is managing the project together with IFIS.

THC co-creators for this project are Andrea Harding and Bret Warshawsky of Symphonics and Claudine Villemot-Kienzle.



In 2023 the team met regularly and attended the Inner Development Goals Summit in Stockholm Sweden.

## COHERENET

One of the deliverables for Cohere+ was an interoperability framework for collecting data about people and organizations. That framework evolved into a project of its own: CohereNET.

This project was initiated by Pieter, together with Andrea Harding of Symphonics and Wendy Ellyatt of the Flourish Project,

Most global movements and projects aiming for systemic change lack coordination, particularly in data mapping and sharing across diverse disciplines and sectors. This fragmentation leads to unawareness of others' efforts, duplication of efforts, lost collaboration opportunities, increased costs, and reduced impact.

CohereNET addresses these issues by fostering partnerships through shared agreements. The project's initial focus is to develop a shared use case to demonstrate its viability, paving the way for formal partnerships and co-creative funding.

CohereNET's holistic design encompasses Data Management, Social, Logistical, and Technological aspects, separating governance of data, technical, and publishing dimensions to leverage partners' expertise and avoid entanglement. Organizationally, it operates on an all-win partnership model, with no single core driver or beneficiary, ensuring all parties thrive through cooperation.

The initiative features a distributed data repository, facilitated by agreements and protocols enabling databases to communicate.

Data stewards, forming a 'Mappers Network,' focus on specific domains, creating a comprehensive planetary data asset. 'Publisher

Partners' in the 'Distribution Network' access and disseminate relevant data, benefiting from improved coordination and data quality. 'Technology Partners' in the 'Infrastructure Alliance' provide solutions for data collection, organization, and distribution, enhancing interoperability.

CohereNET's omniscient partnership model emphasizes win-win agreements, fostering shared stewardship and value exchanges, benefiting all partners financially and operationally while supporting collective goals and celebrating unity in diversity.



PROJECTS 2022-2023

## EMERGENCE

### ECOINTENTION - EUROPE ENERGETICS PROJECT

THC is a partner in [Help2Heal Europe](#), a project of the Center for ECOintention. Several THC members are [ECOintention](#) practitioners, and Marianne de Jager and Natascha van den Ban are actively involved in the project.

Europe is a living entity, an organism with the Ural Mountains and the Volga River as the eastern border. The southern border goes through the Mediterranean. The islands of the Azores are the most western part, followed by Ireland, Scotland and Norway. The North Cape and the Kola peninsula form the northern border.

The organism Europe consists of thirty-three parts, called holons. The shape of a holon is determined by its geographical location and geological structures in the earth's crust. Each holon has, just like an organ, a special function.

Everything is connected in a living whole.

Quantum mechanics says that everything is energy. Good, flowing energy is the basis for positive development and growth. A system that is in good (energetic) condition has high diversity and complexity. All parts develop towards a higher level.

An energy scan made by the Center for ECOintention shows that most of the holons in Europe have (very) low energy. This has a negative effect on social processes, and all ecological and economic systems.

This was the reason to start Project Europe Energetics. The Project aims to contribute to the healing of Europe with ECOintention and other energetic methods in cooperation with local people.

ECOintention is a method to bring healthy energy and flow into ecosystems and

organizations. It combines modern science with ancient wisdom in a practical method. ECOintention is the application of Mind over Matter on a large scale.

Center for ECOintention has developed 9 large-scale projects in natural areas with high transformation potential, where energetic balancing could have the most effect on local, national and international level and where healing is needed first to provide Europe as a whole with good energy. These projects - energetic healing systems - are located in:  
*Western Europe:* Wadden Sea (NL-DE), Mols Bjerger (DK), Hondsrug (NL).

*Eastern Europe:* Bialowieza region (PL-BY), Ugra (RU), Dnjepr Reservoir (UA)

*Central Europe:* West Beskiden (PL), Duna Ipoly (HU), Bükk National Park (HU).

In 2023 3 projects were added for development in South East Europe: Popovopolje (BA-HR), Rtanj Mountain (RS), Zumberacka Gora (HR-SI).

We hope a healthy and vital organism Europe will have a positive effect on ecological, cultural, social and economic processes, and will contribute to the well-being of our most valuable ecosystem: Mother Earth.

*(source: Center for ECOintention)*

Marianne de Jager and Natascha van den Ban are doing energetic balancing for one of the national parks in Hungary (Bükk National Park).

### DAY OF MINDFULNESS AND COMPASSION

Anita Floris holds the space for a Day of mindfulness and heartfulness on July 1st, also known as ketikoti ("the chain is cut" or "the chain is broken"). It is the day that, in 1863, slavery was abolished in Suriname and the Dutch Antilles. The fact that slavery is part of Dutch history is a sensitive subject.

The conversation is often difficult and painful.



By listening deeply to what is alive inside of us when confronted with the role of the perpetrator, rather than that of the victim or the rescuer, we can learn to mature our nervous system. Thereby we can increase our capacity and ability to deal with difficult and painful issues, use our compassion and our heartfulness.

Mindfulness asks us to silently focus our attention on pain and suffering. To use our physical presence both in sitting and in our breathing to face, feel and experience everything that presents itself as thoughts and emotions around the theme of slavery. Although debate and conversation also have their value and their place in this theme, here we ask for quiet attention.

We have several guided exercises on the site, to choose from to find a quiet time on the 1st of July, to sit and pay attention and bear witness.

On July 1st 2023 we organized a meeting through Zoom to guide participants through the meditation and share experiences.

The event was co-created together with the Center for Human Emergence.

## WHOLEWORLD-VIEW

Anne-Marie Voorhoeve is part of the core team of [Whole-World-View](https://www.wholeworld-view.org/) and is actively involved in different DOIT teams of the projects developed.

THC team members have been playing different roles and where possible within THC we have prototyped different frameworks to support further development and possibility for outreach.

In the Fall of 2022 Anne-Marie and Diana Claire partnered with Dr Jude Currivan and Rhodri Samuel of WWV to do a series of Constellating for the Collective Processes on Activism evolving into Sacred Activism. This exploration continues into 2023.

Kara Stonehouse has contributed graphic recordings of themes of the Whole World View to focus the energy and meditations during the

seasonal convergences Peace Week and World Unity Week.



The WholeWorld-View Community was founded by Dr. Jude Currivan and Gil Agnew in 2017, and is a growing interdependent co-operative of global change agents in service to nurturing our personal and collective need for meaning and belonging, celebrating our innate diversity within a unified whole.

Its purpose is to empower the emergence of humanity's conscious evolution through the understanding, experiencing and embodying of unitive awareness.

Based on the book by Jude Currivan, The Cosmic Hologram and The History of Gaia, the WholeWorld-View message of unified reality provides a foundation and practical perspectives towards global problem solving upon which we can shift our individual and collective values and behaviors to be aligned, and in harmony, with the natural world, and universal and cosmic principles





## THC EGYPT

A community hub, The Together Temple has blossomed in Egypt where the Blue Lotus flower is being symbolically reintroduced to nourish a conscious social movement out of Africa. More than a social enterprise, the vision of this groups is to transform consciousness as we prototype new currencies and governance structures.

Drawing on a new world view and the principles of living systems, the motherfund moves beyond our current concepts of economics and social organization and offers a fresh way to share and regulate resources, interrelate, develop innovations, realize ourselves and co-ordinate our intelligence.

THC's Mona Rabie and Aansan Yeh are developing and prototyping a 'Mother Fund' that empowers conscious co-creators to realize wholesome wellbeing as well as their gifts and innovations for a thriving world.

## THE HAGUE CENTER FOR FIELD INQUIRY

The Hague Center for Field Inquiry (THC.FI), was founded by Diana Claire Douglas and Anne-Marie Voorhoeve.

It is a unique organization that explores complex questions and challenges through a phenomenological method of systemic constellation work. This approach involves using a powerful tool for serving all life and humanity's evolution, applying findings to inform strategy, design, and decision-making, and developing new tools, frameworks, and innovations for a regenerative world.

The inquiries we do inform THC and partners on many vital issues, opening new possibilities and perspectives.

An overarching question is "What will it take for Humanity to be in its rightful place in the flow of Love and Life?"

The Hague Center for Field Inquiry (THC.FI) has its own website, developed in 2022:

[www.centerforfieldinquiry.org](http://www.centerforfieldinquiry.org)

From THC.FI's inception, Anne-Marie and Diana Claire have envisioned having a team of experienced Representatives who volunteer to participate in the deep inquiry constellations. There is now a list of over 30 people who are ready to be Representatives.



Diana Claire is meeting with researchers both Constellators and others, asking questions such as "What is research?" "What is the value of having a Center for Field Inquiry?" The results of these and other processes will inform us as to whether THC.FI becomes a holon of THC or is a brand of THC.

Diana Claire and Anne-Marie have been building partnerships for systemic constellation inquiry and research with Georg Muller-Christ and his PhD students of Bremen University Business School; Jude Currivan and the WholeWorld View; Irene Nooren and Holistic Blueprint Society.

In 2022-23 Anne-Marie hosted and Diana Claire facilitated a series of Constellation with Jude Currivan, Rhodri Samuel and WholeWorld-View and the Unitive Narrative, starting with "What does Unity-in-Diversity and Gaia want us to know about Activism now?" This series evolved into constellations on Unitive Justice, Unitive Economics. This inquiry continues,

Systemic Constellation Work Experiments continue in The Conscious Witness Project. Researchers Diana Claire, Judy Wilkins-Smith, Peter Stefanyi.



In the Fall of 2022 Sarah McCrum invited Anne-Marie and Diana Claire to do a series on “The Future of Money Now.” Diana Claire facilitated two constellations sessions in preparation for the three public events. Eighty-three participants joined for all three.

In 2022-23 Diana Claire and Anne-Marie co-facilitated a number of Collective Constellations with partners: LOVETO in Europe, Bright Greens, LOVETO + Investors, and GAIA (Global Artificial Intelligence Association), Bridging Continents, and Divine Mothers’ Love

Anne-Marie and Diana Claire continued their involvement in Bridging Continents Council, in Europe and in North America. Through this connection they were invited to join Divine Mothers’ Love, Unifying Humanity, stewarded by Grandmother Ejna Fleury.

For World Unity Week 2022, Diana Claire and Analesa Berg co-hosted a week-long program in a zoom room called “Being the New Human.” They brought together several speakers and events each day — each an expression of what it means to be a new human. Diana Claire also facilitated a workshop with Hilary van Welter called “The Imaginarium: designing for change.”

For World Unity Week 2023 THC.FI hosted the Unitive Justice Room asking the question What does Unitive Justice want us as Humanity to know right now? Deeply rooted in understanding we are One with Earth Life and Cosmic Life and as part of manifesting the Unitive Narrative (the New Story), it is our intention to explore Justice as it emerges into Unitive Justice through several perspectives and processes. We will listen deeply to the Field, listen to Grandmothers and Wisewoman, experience the Archetypes of Justice, Walk the Spiral of Spiral Dynamics, connect with Truth and Justice for the highest good of the Whole.

For Enlightening Our Way in December 2023, THC.FI hosted the Unitive Justice and Economics Room offering three Constellating for the Collective events: “Unitive Economics: Seeking Guidance from the Field for Regeneration and Peace” with Dr Jude Currian, Rhodri Samuel; “Walking the Spiral as

Economics” with Diana Claire + Anne-Marie ; “Becoming and Being a Conscious Witness in a Collective Field” with Diana Claire + Anne-Marie.

## BRINGING COLLECTIVE CONSTELLATIONS ALIVE: DYNAMIC CONVERSATIONS WITH FACILITATORS OF COLLECTIVE CONSTELLATIONS

Three gatherings of experienced facilitators of Collective Constellations, each who have been participating in the emergence of the most recent branch of Systemic Constellation Work, exploring and sharing messages from the Field about where Humanity is now, where we might be going in the evolution of Consciousness, and the place of Collective Constellations and its impact in these challenging times.

Events in celebration of the publication of Diana Claire Douglas’ book on Constellating for the Collective, *Whole Systems Design: Inquiries in the Knowing Field*

NOV 10, 2022

Interviewer: Dr Julie Krull

Constellators: Anngwyn St Just, Sneh Victoria Schnabel, Francesca Mason Boring, Diana Claire Douglas



Exploring Collective Constellation Work

In celebration of the publication of *Whole Systems Design: Inquiries in the Knowing Field* by Diana Claire Douglas

Conversations with Colleagues  
Constellators

Diana Claire Douglas   Sneh Victoria Schnabel  
Anngwyn St Just   Francesca Mason Boring

Dr. Julie Krull  
Interviewer

Thursday November 10, 2022  
1:00pm-2:30pm EST  
7:00pm-8:30pm CET

Free Event   Registration required: [info@thehaguecenter.org](mailto:info@thehaguecenter.org)

DEC 14, 2022

Interviewer: Katherine Curran

Constellators: Jan Jacob Stam, Karl-Heinz



Rauscher and Bruce Nayowith on “Innovation and Impact in Collective Constellations.”



[https://youtu.be/Yx\\_a87MqZbU](https://youtu.be/Yx_a87MqZbU)

## THE SCIENTIFIC AND MEDICAL NETWORK CONFERENCE

*Evolutionary Visions of the Future* at The Scientific and Medical Network conference was

held on 20th March 2021. Anne-Marie was one of the speakers. The work and mission of the Scientific and Medical Network and that of THC are aligned in our mutual desire to harmonize heart and head, subjective and objective.

The Scientific and Medical Network (SMN) is a worldwide professional community. It promotes a greater acceptance of the human being's spiritual essence, as consistent with science. The network grew into a group of 950 members of scientists that support “open-minded, rigorous and evidence-based inquiry into themes bridging science, spirituality and consciousness”.

Part of this inquiry has been published in the Galileo report





## GOVERNANCE AND ORGANIZATION THC

# ROLE OF THE BOARD

The role of the board is to uphold our legal status as a charitable foundation in the Netherlands in line with the vision developed in THC Core.

The board consists of a chair, a treasurer and a secretary. The role of treasurer and secretary can be fulfilled by one person. The board members are appointed for an indefinite period. The directors receive no remuneration for their work.

The board of the THC consists of:

Chair: Anne-Marie Voorhoeve

Secretary: Anita Floris

Treasurer: Marianne de Jager

